



This excellent site with planning permission passed for a substantial family property offers an excellent opportunity to build your dream home. Offering a rural setting with delightful views over open countryside, yet within half a mile of Newtownards town centre and an easy half hour commute from Belfast.

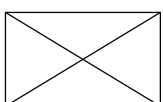
Offers Around
£295,000

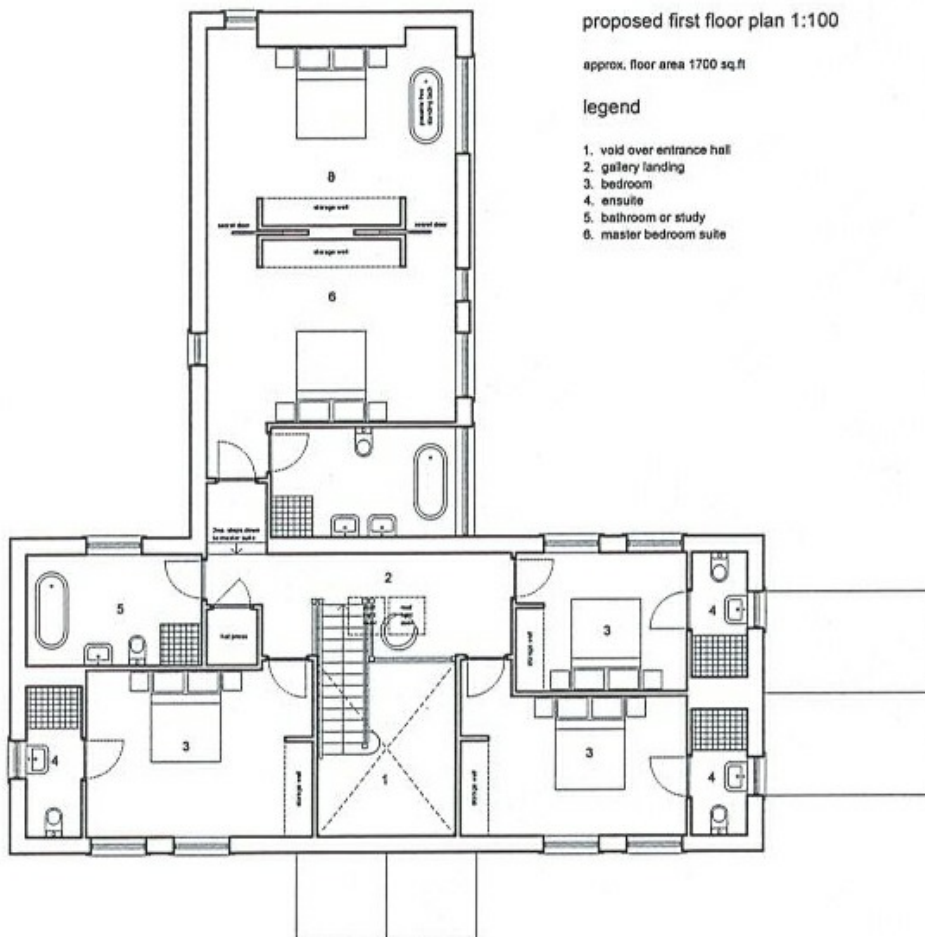
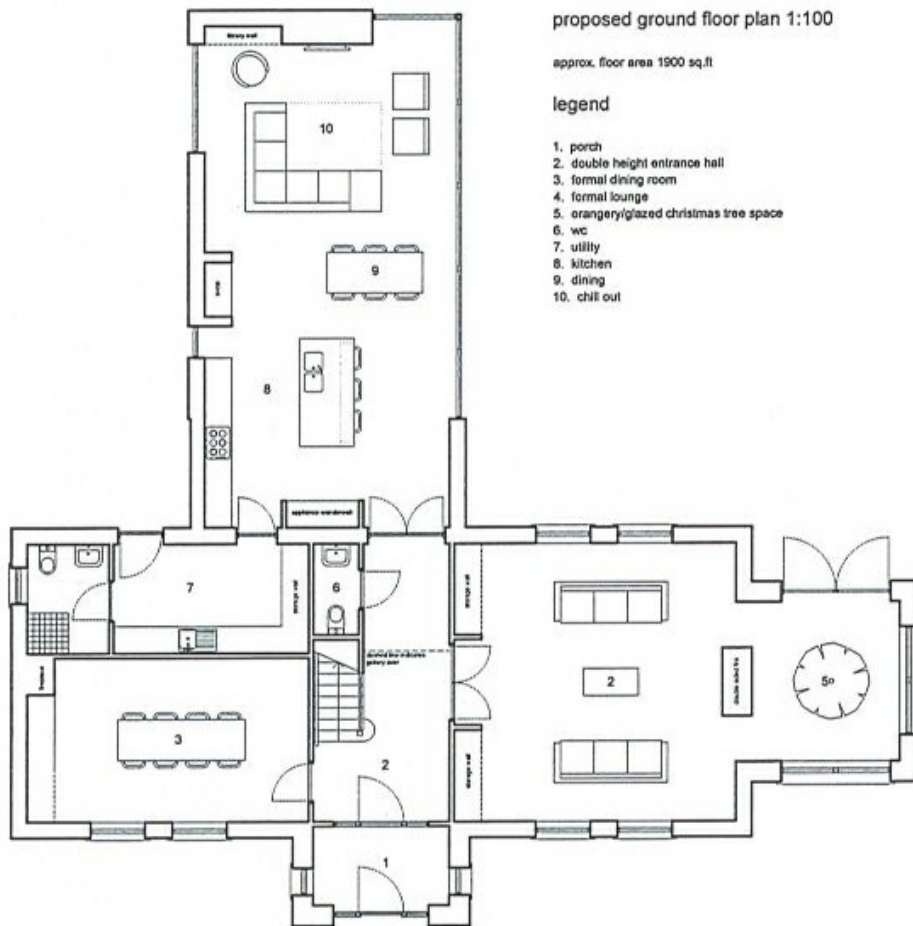
Site Adjacent to
108 Crawfordsburn Road,
NEWTOWNARDS,
BT23 4UJ

Viewing by
appointment
through agent
028 9042 4747



- Building Site with Full Planning Permission Passed for a 4000 sq ft Detached Home on a Level Site of Approximately 1.25 Acres
- Popular & Very Convenient Location
- Planning Application No: LA06/2017/1413/F







Location:

Travelling out of Newtownards on the Crawfordsburn Road, No 101 is on the left hand side.

North Down - 028 90 42 4747

Lisburn Road - 028 90 66 3030

Ballyhackamore - 028 90 65 0000

Lisburn - 028 92 66 1700

www.templetonrobinson.com

These particulars do not constitute any part of an offer or contract. None of the statements contained in these particulars are to be relied on as statements or representations of fact and intending purchasers must satisfy themselves by inspection or otherwise to the correctness of each of the statements contained in these particulars. The Vendor does not make or give, neither Templeton Robinson, nor any person in its employment has any authority to make or give, any representation or warranty whatever in relation to this property. All dimensions are taken to nearest 3 inches.

