

TEMPLETON
ROBINSON

Formative
ARCHITECTS



Site @ 44 Hillsborough
Road,
Comber,
NEWTOWNARDS,
BT23 5PW

LOT 2

Offers Around
£200,000

Viewing by
appointment with
& through agent
028 90 424747



We are pleased to present to the market this superb site set in mature woodland with Full Planning Permission for a spacious detached bungalow.

The plans have been designed to accommodate a range of buyers; from young professionals to retirees. Featuring a spacious, open plan kitchen living dining room with separate utility, primary bedroom, second double bedroom and large bathroom, the accommodation maximises space with a simple, natural flow.

The superb location is ideal for those seeking to enjoy the tranquility of rural living whilst remaining within easy reach of amenities.

Comber is within a short five minute drive and boasts a variety of shops, restaurants, cafes and schools. Belfast is approximately 15-20 minutes away.

Building sites with full planning are hard to find in this locality therefore, we anticipate strong demand, so early viewing is strongly recommended.

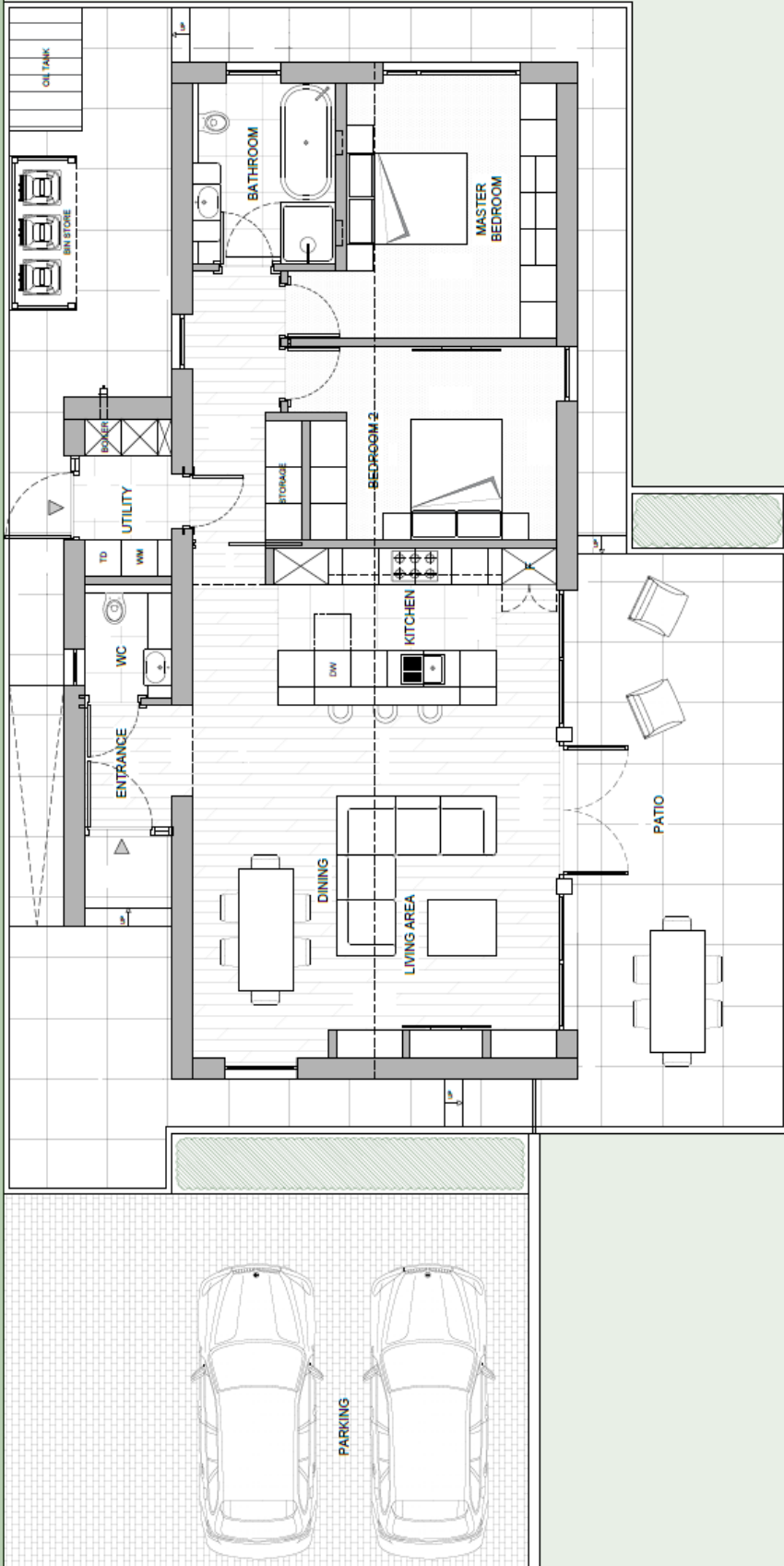
Planning Reference Number:
LA06/2022/0439

Formative
ARCHITECTS



Formative
ARCHITECTS







Telephone 028 9042 4747
www.templetonrobinson.com

North Down - 028 90 42 4747
Lisburn Road - 028 90 66 3030
Ballyhackamore - 028 90 65 0000
Lisburn - 028 92 66 1700

www.templetonrobinson.com



These particulars do not constitute any part of an offer or contract. None of the statements contained in these particulars are to be relied on as statements or representations of fact and intending purchasers must satisfy themselves by inspection or otherwise to the correctness of each of the statements contained in these particulars. The Vendor does not make or give, neither Templeton Robinson, nor any person in its employment has any authority to make or give, any representation or warranty whatever in relation to this property. All dimensions are taken to nearest 3 inches.